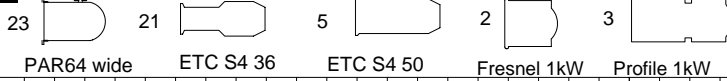


66  
1  
L200

Diagonal

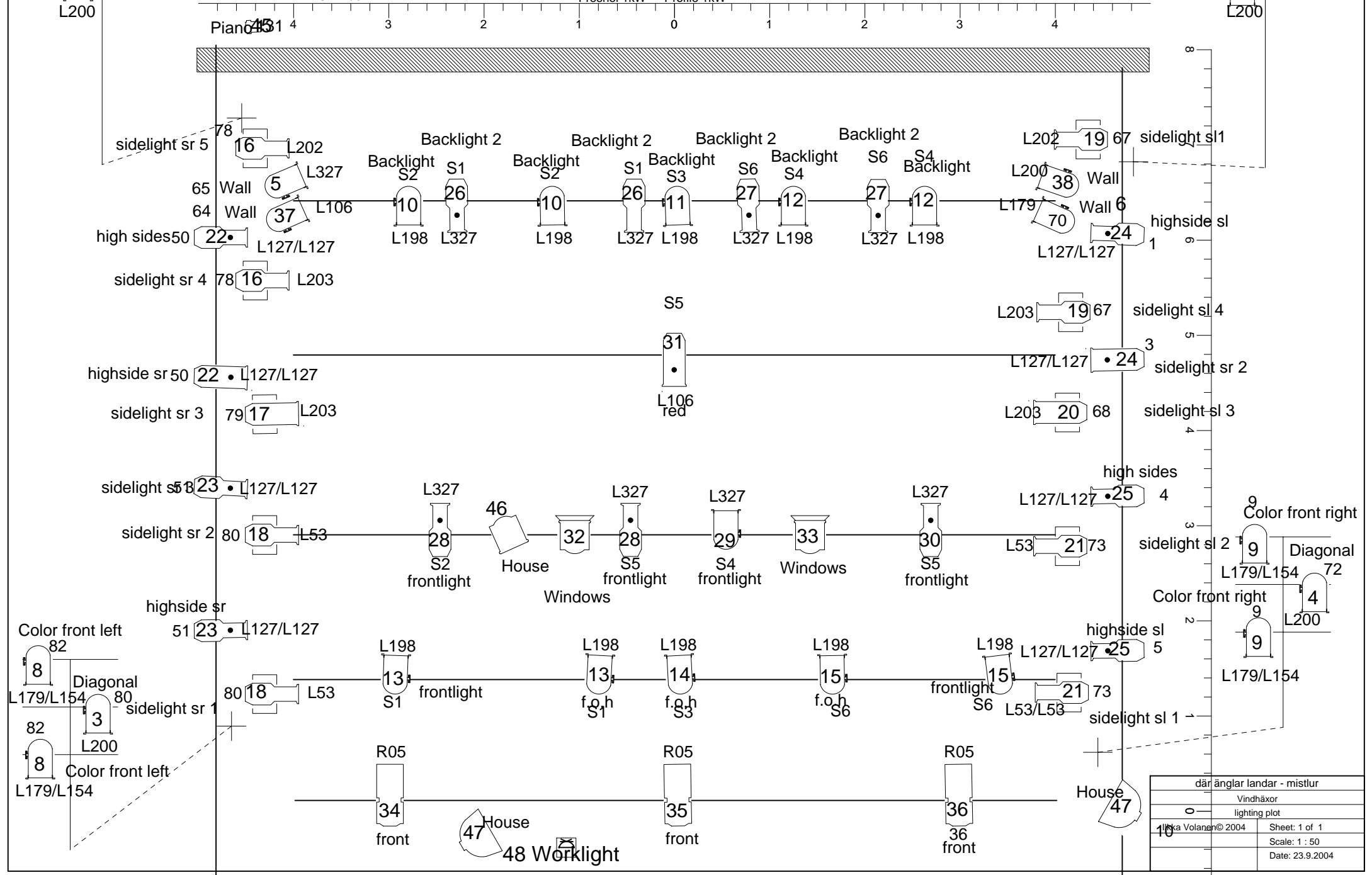
**Legend**

**Qty**



sound st 2 142  
sound34

Diagonal  
69  
2  
L200



där änglar landar - mistlur	
Vindhäxor	
lighting plot	
10	Sheet: 1 of 1
© 2004	Scale: 1 : 50
	Date: 23.9.2004

Venue: Vindhäxor

Production: där änglar landar - mistlur

Ilkka Volanen© 2004

Date: 22.9.2004

## Instrument Schedule

### Location: Floor

Type	Watts	Chan	Color	Gobo	Purpose
PAR64 wide	1000	5	L327		Wall
PAR64 wide	1000	37	L106		Wall
PAR64 wide	1000	6	L179		Wall
PAR64 wide	1000	38	L200		Wall

### Location: Floor SL

Type	Watts	Chan	Color	Gobo	Purpose
ETC S4 36	575	19	L202		sidelight sl1
ETC S4 36	575	19	L203		sidelight sl 4
ETC S4 50	575	20	L203		sidelight sl 3
ETC S4 36	575	21	L53		sidelight sl 2
ETC S4 36	575	21	L53/L53		sidelight sl 1

### Location: Floor SR

Type	Watts	Chan	Color	Gobo	Purpose
ETC S4 36	575	16	L202		sidelight sr 5
ETC S4 36	575	16	L203		sidelight sr 4
ETC S4 50	575	17	L203		sidelight sr 3
ETC S4 36	575	18	L53		sidelight sr 2
ETC S4 36	575	18	L53		sidelight sr 1

### Location: House lights

Type	Watts	Chan	Color	Gobo	Purpose
ALTMAN 16" Scoop 161		47			House

### Location: Studio 2

Type	Watts	Chan	Color	Gobo	Purpose
Pinspot 30W	30	45			Piano

### Location: f.o.h

Type	Watts	Chan	Color	Gobo	Purpose
Niethammer TS 123	2000	34	R05		front
Niethammer TS 123	2000	35	R05		front
Niethammer TS 123	2000	36	R05		front

### Location: First front lights

Type	Watts	Chan	Color	Gobo	Purpose
PAR64 wide	1000	13	L198		frontlight
PAR64 wide	1000	13	L198		f.o.h
PAR64 wide	1000	14	L198		f.o.h
PAR64 wide	1000	15	L198		f.o.h
PAR64 wide	1000	15	L198		frontlight

### Location: High sidelights left

Type	Watts	Chan	Color	Gobo	Purpose
ETC S4 36	575	22	L127/L127		high sides
ETC S4 50	575	22	L127/L127		highside sr
ETC S4 36	575	23	L127/L127		highside sr
ETC S4 36	575	23	L127/L127		sidelight sr 3

### Location: High sidelights right

Type	Watts	Chan	Color	Gobo	Purpose
ETC S4 36	575	24	L127/L127		highside sl
ETC S4 50	575	24	L127/L127		sidelight sr 2
ETC S4 36	575	25	L127/L127		highside sl
ETC S4 36	575	25	L127/L127		high sides
ALTMAN 16" Scoop 161		47			House

### Location: Backlights

Type	Watts	Chan	Color	Gobo	Purpose
PAR64 wide	1000	10	L198		Backlight
PAR64 wide	1000	10	L198		Backlight
PAR64 wide	1000	11	L198		Backlight
PAR64 wide	1000	12	L198		Backlight

**Location: Backlights**

Type	Watts	Chan	Color	Gobo	Purpose
PAR64 wide	1000	12	L198		Backlight
ETC S4 36	575	26	L327		Backlight 2
ETC S4 36	575	26	L327		Backlight 2
ETC S4 36	575	27	L327		Backlight 2
ETC S4 36	575	27	L327		Backlight 2

**Location: Left back**

Type	Watts	Chan	Color	Gobo	Purpose
PAR64 wide	1000	1	L200		Diagonal

**Location: Right Back**

Type	Watts	Chan	Color	Gobo	Purpose
PAR64 wide	1000	2	L200		Diagonal

**Location: Left Front**

Type	Watts	Chan	Color	Gobo	Purpose
PAR64 wide	1000	8	L179/L154		Color front left
PAR64 wide	1000	3	L200		Diagonal
PAR64 wide	1000	8	L179/L154		Color front left

**Location: Right Front**

Type	Watts	Chan	Color	Gobo	Purpose
PAR64 wide	1000	9	L179/L154		Color front right
PAR64 wide	1000	4	L200		Diagonal
PAR64 wide	1000	9	L179/L154		Color front right

**Location: middle pipe**

Type	Watts	Chan	Color	Gobo	Purpose
ETC S4 50	575	31	L106		red

**Location: middle**

Type	Watts	Chan	Color	Gobo	Purpose
ETC S4 36	575	28	L327		frontlight
PAR64 wide	1000	29	L327		frontlight
ETC S4 36	575	30	L327		frontlight
ETC S4 36	575	28	L327		frontlight
ADB F101		32			Windows
ADB F101		33			Windows
ADB F101		46			House

Note: Dimmer/DMX column format is (DMXBUS).(Start DMX Address)-(End DMX Address)

**End of Report**

Venue: Vindhäxor

Production: där änglar landar - mistlur

Ilkka Volanen© 2004

Date: 22.9.2004

## Channel Schedule

Channel	Dim	Cir	Inst	Location	Color	Purpose
1	1	66	3	Left back	L200	Diagonal
2	2	69	6	Right Back	L200	Diagonal
3	3	80	8	Left Front	L200	Diagonal
4	4	72	11	Right Front	L200	Diagonal
5	5	65	2	Floor	L327	Wall
6	6	70	5	Floor	L179	Wall
8	8	82	8	Left Front	L179/L154	Color front left
	8	82	8	Left Front	L179/L154	Color front left
9	9	9	11	Right Front	L179/L154	Color front right
	9	9	11	Right Front	L179/L154	Color front right
10	10	S2	14	Backlights	L198	Backlight
	10	S2	13	Backlights	L198	Backlight
11	11	S3	15	Backlights	L198	Backlight
12	12	S4	16	Backlights	L198	Backlight
	12	S4	17	Backlights	L198	Backlight
13	13	S1	18	First front lights	L198	frontlight
	13	S1	19	First front lights	L198	f.o.h
14	14	S3	19	First front lights	L198	f.o.h
15	15	S6	22	First front lights	L198	frontlight
	15	S6	21	First front lights	L198	f.o.h
16	16	78	26	Floor SR	L203	sidelight sr 4
	16	78	23	Floor SR	L202	sidelight sr 5
17	17	79	28	Floor SR	L203	sidelight sr 3
18	18	80	31	Floor SR	L53	sidelight sr 2
	18	80	35	Floor SR	L53	sidelight sr 1
19	19	67	36	Floor SL	L202	sidelight sl1
	19	67	37	Floor SL	L203	sidelight sl 4
20	20	68	38	Floor SL	L203	sidelight sl 3
21	21	73	39	Floor SL	L53	sidelight sl 2
	21	73	40	Floor SL	L53/L53	sidelight sl 1
22	22	50	24	High sidelights left	L127/L127	high sides
	22	50	25	High sidelights left	L127/L127	highside sr
23	23	51	27	High sidelights left	L127/L127	highside sr
	23	51	29	High sidelights left	L127/L127	sidelight sr 3
24	24	1	30	High sidelights right	L127/L127	highside sl
	24	3	32	High sidelights right	L127/L127	sidelight sr 2
25	25	4	34	High sidelights right	L127/L127	high sides
	25	5	33	High sidelights right	L127/L127	highside sl
26	26	S1	42	Backlights	L327	Backlight 2
	26	S1	41	Backlights	L327	Backlight 2
27	27	S6	43	Backlights	L327	Backlight 2
	27	S6	44	Backlights	L327	Backlight 2
28	28	S2	45	middle	L327	frontlight
	28	S5	47	middle	L327	frontlight
29	29	S4	46	middle	L327	frontlight
30	30	S5	47	middle	L327	frontlight
31	31	S5	47	middle pipe	L106	red
32	32		54	middle		Windows
33	33		55	middle		Windows
34	34		50	f.o.h	R05	front
35	35		51	f.o.h	R05	front
36	36	36	52	f.o.h	R05	front
37	37	64	2	Floor	L106	Wall
38	38		5	Floor	L200	Wall
45	45	131	55	Studio 2		Piano
46	46		58	middle		House
47	47		57	House lights		House
	47	10	59	High sidelights right		House

Note: Dimmer/DMX column format is (DMXBUS).(Start DMX Address)-(End DMX Address)

End of Report

**Venue: Vindhäxor**

**Production: där änglar landar - mistlur**

**Ilkka Volanen© 2004**

**Date: 22.9.2004**

### Inventory List

Stock	Used	Rent	Type	Watts	Notes
	21	21	ETC S4 36	575	
	5	5	ETC S4 50	575	
	3	3	Niethammer TS 123	2000	
	3	3	ADB F101		
	23	23	PAR64 wide	1000	
	2	2	ALTMAN 16" Scoop 161		
	1	1	Pinspot 30W	30	

**End of Report**

**Venue: Vindhäxor**

**Production: där änglar landar - mistlur**

**Ilkka Volanen© 2004**

**Date: 22.9.2004**

**GEL Cut List**

<b>Qty</b>	<b>Color</b>	<b>Size</b>	<b>Alias:</b>	<b>Name</b>
1	L106	159 x 159	L106	Primary Red
1	L106	254 x 254	L106	Primary Red
16	L127	159 x 159	L127	Smokey Pink
4	L154	254 x 254	L154	Pale Rose
5	L179	254 x 254	L179	Chrome Orange
10	L198	254 x 254	L198	Palace Blue
5	L200	254 x 254	L200	Double C.T. Blue
2	L202	159 x 159	L202	1/2 C.T. Blue
4	L203	159 x 159	L203	1/4 C.T. Blue
7	L327	159 x 159	L327	Forest Green
2	L327	254 x 254	L327	Forest Green
5	L53	159 x 159	L53	Paler Lavender
3	R05	215 x 215	R05	Rose Tint

**End of Report**

## DÄR ÄNGLAR LANDA - MISTLUR

	<b>10</b>	House			
	<b>11</b>	B.O			
	<b>0,6</b>	PIANO			
0:00	<b>12</b>	Steph	White	X	in and ready
0:30 0:30:00	<b>13</b>	3rd or 4th	White	X	
1:00:00 1:10:00	<b>14</b>	Dan	White	White Green	
2:10:00 1:00:00 2:10:00	<b>16</b>	All in	White	White Green	
3:10:00 1:40:00	<b>17</b>	Dan solo 1	White+orange	Blue	
4:50:00 2:20:00 1:40:00	<b>19</b>	Aleksandra	White+orange	Red Wall	
7:10:00 1:00:00	<b>21</b>	Hands	Blue	White Green	
8:10:00 2:20:00	<b>22</b>	Steph and Ingrid 1	White	White Green	
10:30:00 5:00:00	<b>25</b>	Dan solo 2	Blue	White Green	piano
15:30:00 1:35:00	<b>28</b>	Steph solo 1	Green + white	Green	
17:05:00 0:45:00	<b>29</b>	everybody	Green	Green	
17:50:00 0:30:00	<b>30</b>	window	Green	Window	
18:20:00 1:10:00 2:50:00	<b>31</b>	window off	Green	Red	
19:30:00 2:00:00	<b>33</b>	Aleksandra and Dan	Red spot	Red	
21:30:00 4:10:00	<b>35</b>	Ingrid solo 1	Red spot	Red	
25:40:00 3:00:00	<b>38</b>	in front	Red+Orange	White	hands upp
28:40:00 1:20:00	<b>39</b>	Boys	Red+Green	White	
30:00:00 3:10:00 10:30:00	<b>41</b>	Trio	Red+Blue+Green	X	
33:10:00 2:20:00	<b>42</b>	Steph solo 2	Green+White	Green	
35:30:00 0:40:00 2:20:00	<b>43</b>	Green off	Green Blue	X	everybody in
36:10:00 1:10:00	<b>44</b>	everybody	Sides	White	music/jump
37:20:00 1:00:00	<b>46</b>	floor	White Dark	X	stepping others
38:20:00 1:30:00 1:00:00	<b>0,1</b>	darker	White Dark	X	

39:50:00	3:30:00	<b>47</b>	Ingrid solo 2	Red spot	X	
43:20:00	2:00:00	<b>48</b>	red	Red	Red Orange	everybody in
45:20:00	1:15:00	5:30:00	<b>49</b>	old red	Red+Orange	Red Orange 5 piano
46:35:00	0:35:00	<b>52</b>	Steph and Ingrid 2	White		
47:10:00	0:50:00	<b>53</b>	red spot off	White Dark		
48:00:00	0:50:00	<b>54</b>	front light off	White Dark		
48:50:00	3:30:00	2:15:00	<b>55</b>	darker	Dark	X
52:20:00		<b>56</b>	B.O			
		<b>57</b>	Claptons			
		<b>58</b>	House			
		<b>59</b>	B.O			



